

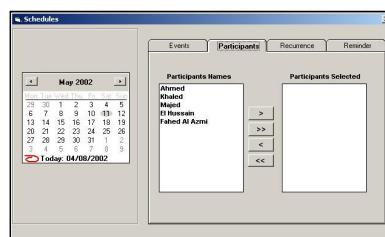
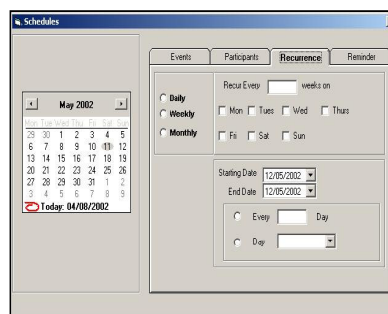
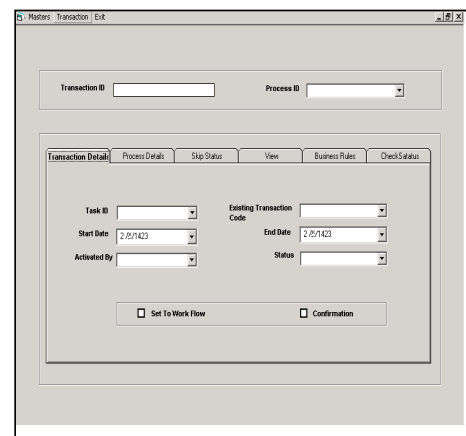


# Flow Easy

- Automated job order entry.
- Reminders for key processes.
- Activity alarms.
- Event notification alerts.
- Task assignment and routing.
- Automatic notifications internal mailing.
- Easy resume routing.
- Integrated management reporting.
- Easily track the progress of jobs across the organization.
- Integrate office activity directly into management reports.
- Manual and automatic tracking of all policy documentation.
- Powerful audit trails allow you to define, control and monitor processes.
- Automated job order entry.
- Reminders for key processes.
- Activity alarms.
- Event notification alerts.
- Task assignment and routing.
- Automatic notifications internal mailing.
- Easy resume routing.
- Integrated management reporting.
- Easily track the progress of jobs across the organization.
- Integrate office activity directly into management reports.
- Manual and automatic tracking of all policy documentation.
- Powerful audit trails allow you to define, control and monitor processes.

Flow Easy is extremely flexible, allowing you to direct the system to suit the needs of your staff and customers. Graphical user interface provides easy work process modeling and streamlining. Routing and notification services guarantee smooth workflow despite user error or absence. The Workflow Suite provides the efficiency and security of rules-based routing and monitoring while also supporting ad hoc participation in the workflow environment.

Flow Easy is Client/Server based Work Flow Management System that is built around an intelligent & process defined Work flow system, which will enable users you to control their key processes & define their own process and sub process, set service standards and automates documentation and routine tasks such as letters, diaries and transactions etc



The Flow Easy gives you total control of the management of day-to-day administrative tasks and frees your staff from time-consuming and tedious functions, giving them more opportunity to develop customer relationships and generate new business



**Build your office as you like**

**For More Details Contact**  
**Demco Consults**  
**PO Box No 43496**  
**Hawally**  
**Kuwait-32049**  
**Ph: 0965-2617218**  
**Fax:0965-2617238**  
[info@demcoconsult.com](mailto:info@demcoconsult.com)  
[www.demcoconsult.com](http://www.demcoconsult.com)